



## Q-SYS IP PTZ 12x72

## Q-SYS IP PTZ 20x60

IP-PTZ Conferencing Cameras

### Features

- Conference video for the Q-SYS AV-to-USB Bridging Solution
- Distribute video via the Q-LAN network anywhere it is needed
- Resolutions up to 1080p60
- Image rotation controls to allow for inverted mounting using optional ceiling bracket (P/N:)
- Motorized Pan, Tilt and Zoom (PTZ) provides complete room coverage and privacy
- Auto Exposure, Auto Focus and Auto White Balance modes
- Native custom camera interfaces through Q-SYS Designer Software
- Includes wall mount bracket for simple installation

## Q-SYS IP PTZ 12x72

## Q-SYS IP PTZ 20x60



The PTZ 12x72 / PTZ 20x60 cameras integrate with the Q-SYS™ Platform and Q-SYS bridging peripherals like the Q-SYS I/O-USB Bridge or Q-SYS TSC-7t Touch Screen Dialer & Controller to deliver professional quality conference video feeds alongside industry leading audio processing for small, medium and large sized meeting rooms for utilizing soft-codec conferencing or computer-based capture.

### Benefits

- **Networked PC Integration:** The camera's network distribution allows every PC, at the table or in the rack, to simultaneously access and control the Q-SYS audio and camera video streams using the AV-to-USB Bridging built into the I/O-USB Bridges and TSC-7t.
- **Flexible:** Simultaneous IP Streaming, HDMI and 3G-SDI outputs providing designers tremendous flexibility when including in enterprise system designs.
- **Enterprise Management:** Can be controlled and managed through Q-SYS Designer, and Q-SYS User Controlled Interfaces (UCI).
- **Real Time Feedback:** View the camera's video while controlling the camera on Q-SYS UCIs

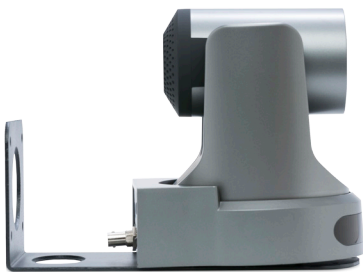
### Key Features

- PTZ 20x60: 20x optical zoom, 60° horizontal Field of View (FoV)
- PTZ 12x72: 12x optical zoom, 72° horizontal Field of View (FoV)
- Low Noise CMOS Image Sensor, S/N Ratio  $\geq$  55dB
- Simultaneous IP Streaming, HDMI and 3G-SDI outputs
- Power over Ethernet (PoE, 802.3af) or local 12v power supply
- Multiple resolutions- provides for a greater range of connectivity resolutions for different application and network environments
- Optimized for quiet operation
- Fully compatible with all existing and future Q-SYS Cores
- Covered by QSC Systems 3-year warranty

# IP-PTZ Conferencing Cameras - Details



I/O-USB Bridge not included



PTZ-CMB1 Ceiling Mounting Bracket



## Specifications

### System Details

Image Sensor	1/2.7", Low Noise CMOS Image Sensor	
Lens characteristics (wide to tele)		
<b>PTZ 12x72</b>	12x optical zoom, f=3.5mm to 42.3mm, F1.8 to F2.8; Horizontal Field of View: 72.5° to 6.9°, Vertical Field of View: 44.8° to 3.9°	
<b>PTZ 20x60</b>	20x optical zoom, f=4.42mm to 88.5mm, F1.8 to F2.8; Horizontal Field of View: 60.7° to 3.36°, Vertical Field of View: 34.1° to 1.89°	
Minimal Illumination	0.05 lux at F1.8 (AGC On)	
Noise Reduction	2D and 3D	
S/N Ratio	≥ 55dB	
Pan / Tilt Angle and Speed	Pan: ±170° rotation, speed: 1.7° to 100°/sec, Tilt: -30° to +90° rotation, speed: 1.7° to 69.9°/s	
Ceiling Mountable	Image rotation for ceiling mounting, ceiling mount bracket accessory available	
HD Video Outputs	HDMI and 3G-SDI	
Ethernet	100BaseTX / 1000BaseT	
Video Resolutions	HDMI / SDI:	Network (30fps, 16:9):
	1080p 60/50/30/25	1080p, 720p, 576p
	1080i 60/50	360p, 270p, 180p
	720p 60/50/30/25	
Input Voltage	DC 12V or PoE (802.3af)	
Current Consumption	12v DC @ 1.0A (max)	
Operating Temperature	-10°C - 40°C (14°F - 104°F), Indoor use only	
Storage Temperature	-40°C - 60°C (-40°F - 140°F)	
Power Consumption	12W (max)	
Dimensions	7.5 in x 5.6 in x 6.5 in (169mm x 142mm x 164mm)	
Weight	3.0 lbs (1.35 kg)	

\*\*Specifications are preliminary and are subject to change without notice\*\*

# QSC®

1675 MacArthur Boulevard • Costa Mesa, CA 92626 • Ph: 800/854-4079 or 714/957-7100 • Fax: 714/754-6174  
 © 2016 QSC, LLC all rights reserved. QSC, Q-SYS and the QSC logo and the QSC logo are registered trademarks of QSC, LLC in the U.S. Patent and  
 Trademark office and other countries. All other trademarks are the property of their respective owners. Patents may apply or be pending.

Q-SYS IP PTZ 12x72 IP PTZ 20x60 Spec Sheet 12/13/2016



please recycle