

Technical Notes

Q-SYS Core



The Q-SYS Media Drive

The purpose of this technical note is to explain the Q-SYS Core models' onboard media playback systems, covering these three topics:

- Audio storage capacity of the Q-SYS Core models
- Media upgrade options available for each model
- Upgrading to larger playback options

Core model storage capacities

Each Q-SYS Core's default media drive and multi-track player (MTP) provide up to 16 individual playback channels, with a minimum of five hours (2.3 GB) of audio storage (24-bit, 48 kHz mono WAV file). All Q-SYS media drives can reproduce WAV, MP3, and FLAC audio files—at 8, 16, 24, and 32 bits, fixed or floating point—with sample rates ranging from 8 kHz to 96 kHz. Media are stored on internal solid state drives within the core. NOTE: The Core 1100 and Core 3100 both have a minimum capacity of 27 hours (13.5 GB) of default media storage.

Available media drive upgrades and their storage capacities

- **Small Media Drive (MD-S)**—Provides a minimum of 130 hours (80 GB) of audio storage (24-bit, 48 kHz mono WAV file).
- **Medium Media Drive (MD-M)**—Provides a minimum of 260 hours (160 GB) of audio storage (24-bit, 48 kHz mono WAV file).
- **Large Media Drive (MD-L)**—Provides a minimum of 1200 hours (600 GB) of audio storage (24-bit, 48 kHz mono WAV file).
- **Media Drive MD-110**—For the Core 110f only. Provides a minimum of 200 hours (128 GB) of audio storage (24-bit, 48 kHz mono WAV file).

All media drive options can be installed in the field by any technician with a basic understanding of computer hardware. Installation instructions are included with the drive.

Multi-track player (MTP)

The MTP plays simultaneous mono or stereo files, as well as multi-track WAV files. These are the available options:

- **MTP-32**—32 tracks
- **MTP-64**—64 tracks (not available for Core 110f)
- **MTP-128**—128 tracks (not available for Core 110f)

NOTE: For an MTP to play more than 16 tracks, its Core must have an upgraded media drive and an applicable MTP key.

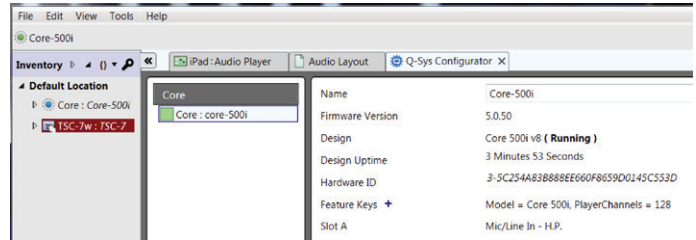


Figure 1.

Purchasing and installing an MTP key

To purchase a key for an upgraded MTP, send an e-mail message to qsyssupport@qsc.com. Include the Core Hardware ID and attach a copy of the sales receipt (a legible scan is acceptable). To look up the Core Hardware ID, open Q-SYS Designer and go to **Tools>Show Q-Sys Configurator ...**. Click on the core unit's icon to open the information page where the ID is displayed (see Figure 1); you might need to enter a password if the core unit has been secured.

When you receive the 50-digit upgrade key via e-mail from QSC, go to the core unit's information page in Q-SYS Configurator and click on **+**, next to **Feature Keys** (Figure 2). Copy and paste the key into the **Add Feature Key** box. If it is a valid key, the box will display, in green text, the new feature you are enabling (Figure 3). Click **OK**. The **Feature Keys** line lists all keys enabled on the core unit.

NOTE: Each Feature Key is valid for a specific Core Hardware ID and cannot be copied or transferred to other core units.

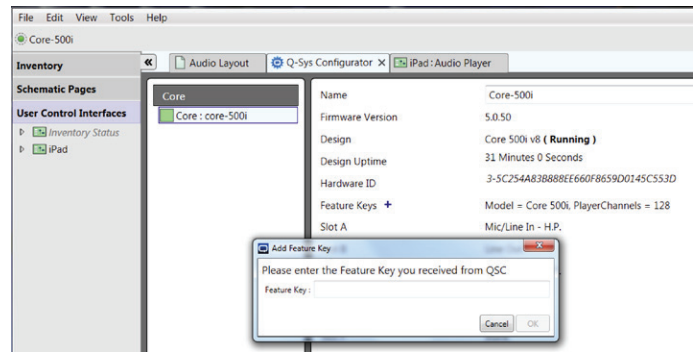


Figure 2.

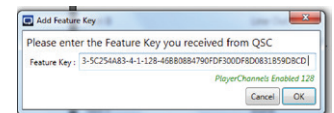


Figure 3.